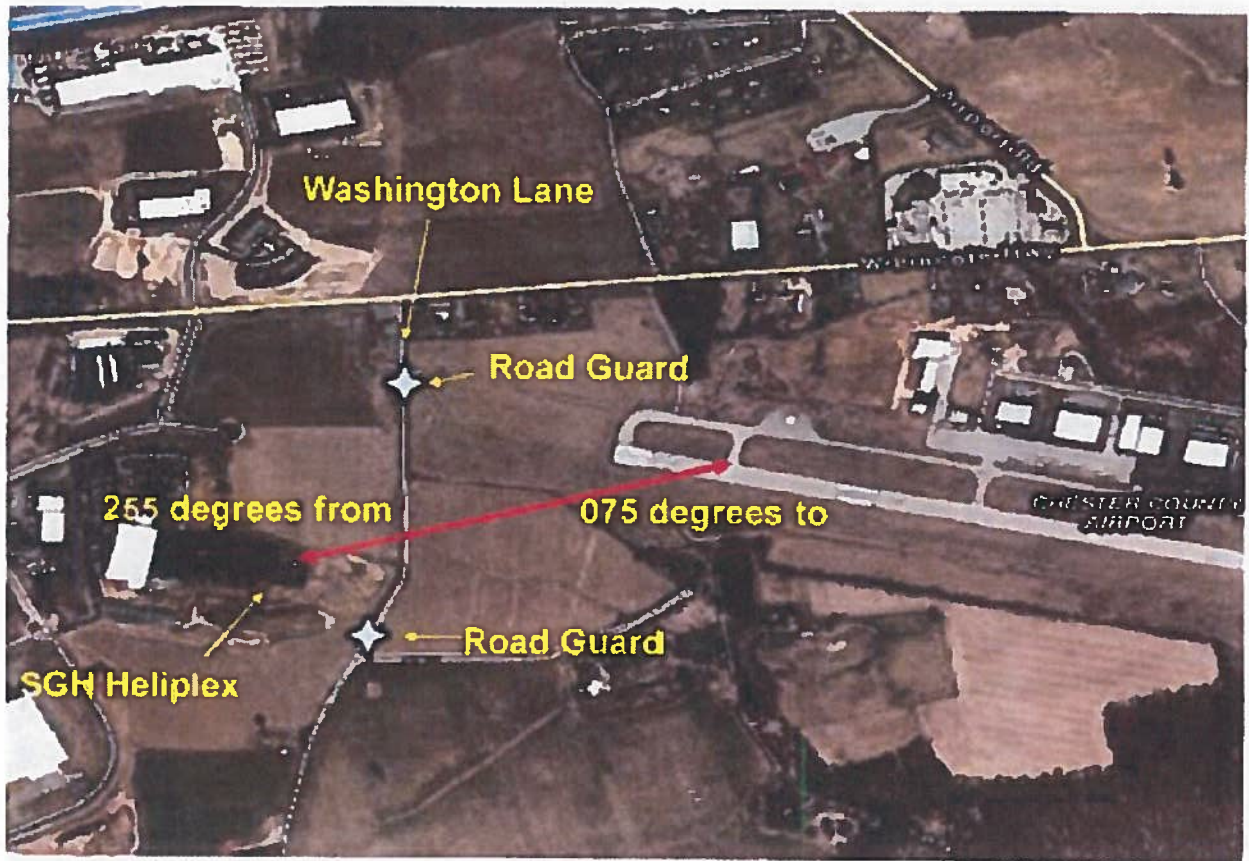


Sikorsky Hover Operations from Heliplex to Chester County Airport (KMQS)



DEPARTURES: All S-92 and S-76 aircraft will hover-taxi from the Sikorsky Heliplex to the Chester County Airport (KMQS) and depart the active runway in accordance with KMQS course rules. All aircraft shall remain South of the runway centerline until perpendicular to taxiway "B". Cross the runway on a perpendicular path to maximize visibility for approaching and departing aircraft.

ARRIVALS: All S-92 and S-76 aircraft arriving at the Sikorsky Heliplex will hover-taxi from the departure end of KMQS runway 29 or taxiway "A" to the Sikorsky Heliplex.

NOISE ABATEMENT: The Sikorsky Heliplex lies in a highly noise-sensitive area due to the close proximity of two housing complexes. Sikorsky pilots shall comply with KMQS pattern departure requirements, avoiding the housing complex to the Southwest of the Sikorsky Heliplex facility and shall avoid overflying Route 30 (Business) to the North until at 2,900 feet MSL or above. For all S-92 aircraft departing KMQS Runway 29, pilots will depart from taxiway "E" (or further East) to ensure sufficient altitude prior to flying in proximity to the noise-sensitive areas to the West of the Sikorsky Heliplex.